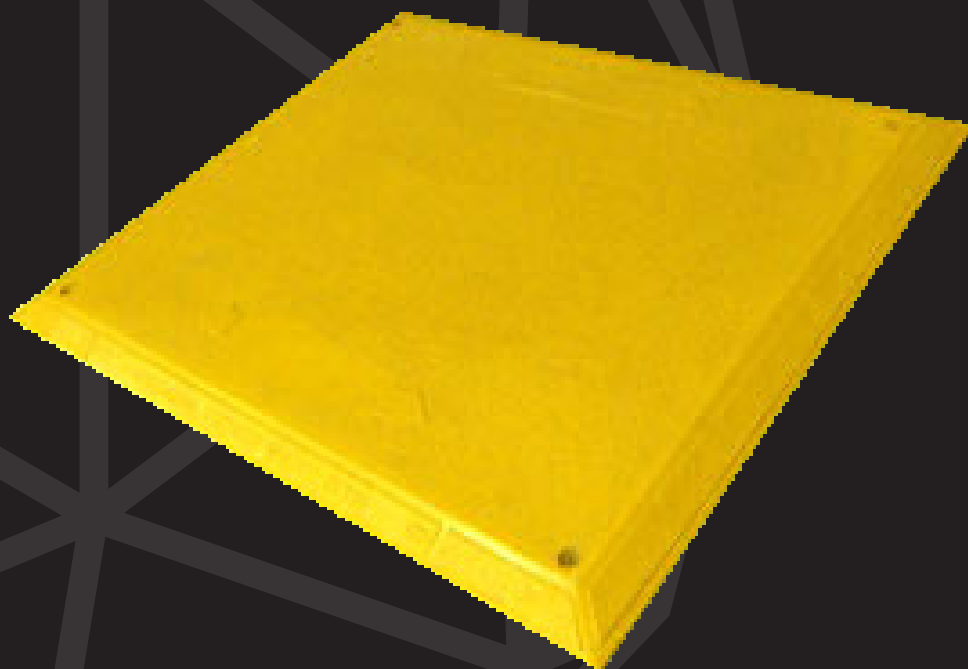


ROAD SAFETY

BY TRICEL



UK'S LEADING
DESIGNER & MANUFACTURER



ROAD PLATE

1400x1200MM

APPROVED TO 6,000KG SAFE WORKING LOAD

STOCK CODE: 17050012



TRICEL

GENERATIONS OF INNOVATION

STOCK CODE:
17050012

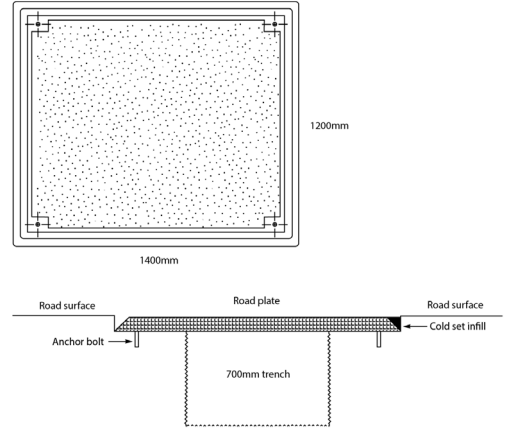
ROAD PLATE

1400x1200MM

APPROVED TO 6,000KG SAFE WORKING LOAD

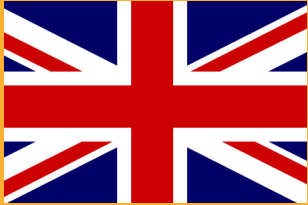
Highly cost-effective solution to site access and safety. Fully compliant with UK and European legislation.

Designed to allow the passage of most vehicles, including HGV's, up to normal weight restrictions.



ROAD SAFETY

BY TRICEL



UK'S LEADING
DESIGNER & MANUFACTURER



SPECIFICATIONS

- Lightweight, easy to lift & install by two people.
- Capable of safely supporting a load of 6 tonne.
- Manufactured from Glass Reinforced Polymer (GRP) – high strength.
- Extreme high grip surface, even when wet.
- Approved to 6,000kg safe working load (SWL).
- Designed to cover trench excavations of up to 700mm.
- Easy to clean & maintain.
- 1400mm x 1200mm Road plate - 47 kg.
- Recessed fixing holes provided at each corner.
- Anchor pins are available for use with bitumen & concrete surfaces.

SAFETY

It is important that the recommended installation procedures are followed to ensure both safety and correct usage.

- Exceeds HSE slip resistance requirements.
- Tricel safety products are fully compliant with UK & European legislation:
 - Department for Transport (Safety at street works & road works, October 2013).
 - Department for Transport (Practical guide for street works, June 2006).
 - DETR (Best practice in street works & highway works, 2001).
 - Transco (T/SP/E42. Technical specifications for footway boards, ramps & road plates).

* Approximate dimensions.

In accordance with Tricel's normal policy of product development these specifications are subject to change without notice.

Tricel (Gloucester) Ltd. - Fox House, Stonedale Road, Stonehouse, Gloucestershire, GL10 3SA, United Kingdom.

Tel: +44 1453 791616 | Email: constructionsales@tricel.co.uk | www.tricel.co.uk

102705-1155086/1-UK-APR2024