

# TREATMENT PERFORMANCE RESULTS

**Tricel (Killarney)**  
Ballyspillane Industrial Est., Killarney, Co. Kerry, Ireland

**EN 12566-3**  
Results corresponding to EN 12566-3 and S.R. 66

PIA-SR66-1612-1135

**Puraflo + Fortis**  
Peat filter system

Nominal organic daily load	0.33 kg/d		
Nominal hydraulic daily load	0.90 m <sup>3</sup> /d		
Material	Glass reinforced plastic		
Watertightness	Pass		
Structural behaviour (crushing resistance)	Pass (Fortis: wet, Puraflo: dry)		
Durability	Pass		
Treatment efficiency (nominal sequences)		Efficiency	Effluent
		COD	95.4 % 31 mg/l
		BOD <sub>5</sub>	98.2 % 6 mg/l
		NH <sub>4</sub> -N	96.9 % 1.1 mg/l
		SS	97.7 % 8 mg/l
Number of desludging	Not more than once		
Electrical consumption	0.06 kWh/d		

Performance tested by:

**PIA – Prüfinstitut für Abwassertechnik GmbH**  
(PIA GmbH)  
Hergenrather Weg 30  
52074 Aachen, Germany

This document replaces neither the declaration of performance nor the CE marking.



Notified Body  
No.: 1739



Certified according to  
ISO 9001:2008

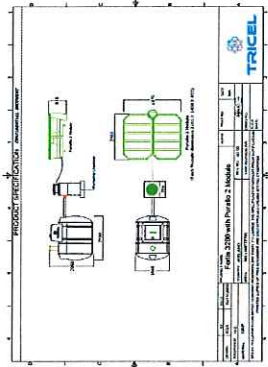


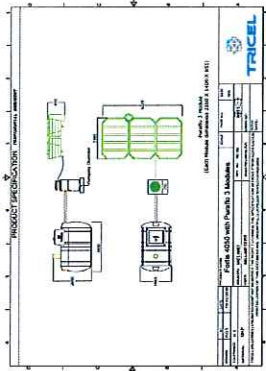
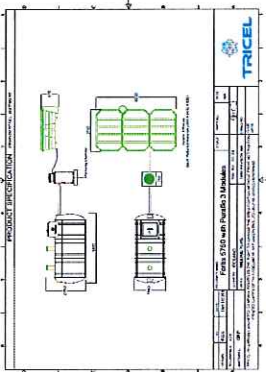
Prüfinstitut für Abwassertechnik GmbH  
*Elmar Lancé*  
Geprüft - getestet - teste

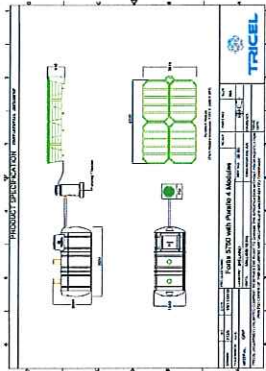
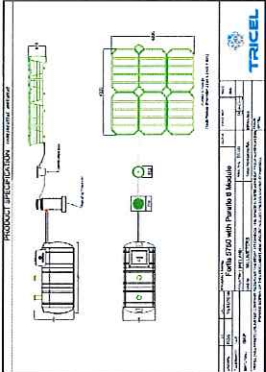
Elmar Lancé

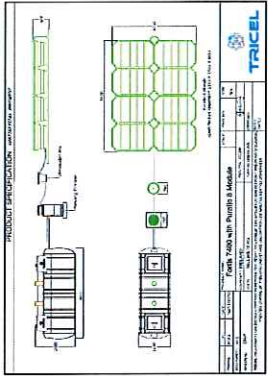
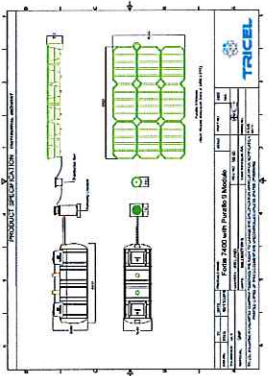
December 2016

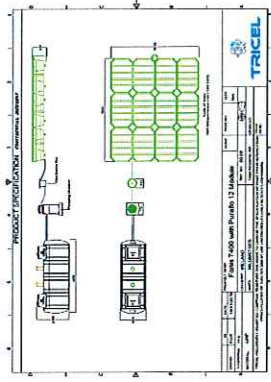
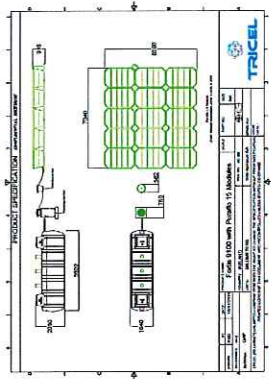
Puraflo + Fortis range and its referring test reports:

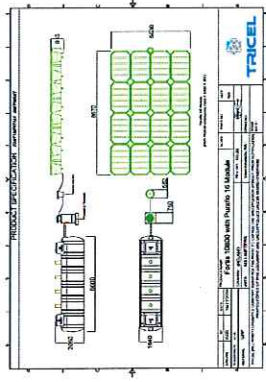
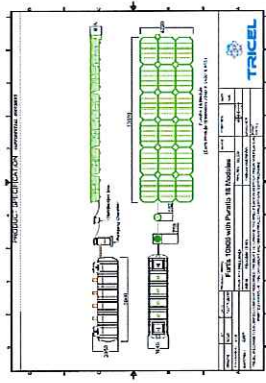
Population equivalent (PE)	Drawing of model of the range	Watertightness (EN 12566-3 Annex A)	Treatment Efficiency (EN 12566-3 Annex B)	Structural Behaviour (EN 12566-3 Annex C)	Durability
Initial Type Test (ITT) 6	not relevant	not relevant	Pass PIA2013-166B33	not relevant	not relevant
Compared model/tanks 6		Pass PIA2015-WD/NC-1404-1021.01 PIA2010-WD-0909-1057	Pass Range conformity according to S.R. 66:2015	Pass For wet ground conditions also, 1.25 m installation depth from inlet invert  For dry ground conditions only, 0.10 m installation depth from inlet invert	Pass PIA2015-DH-1504-1023.1 PIA2016-DH-1604-1056.01

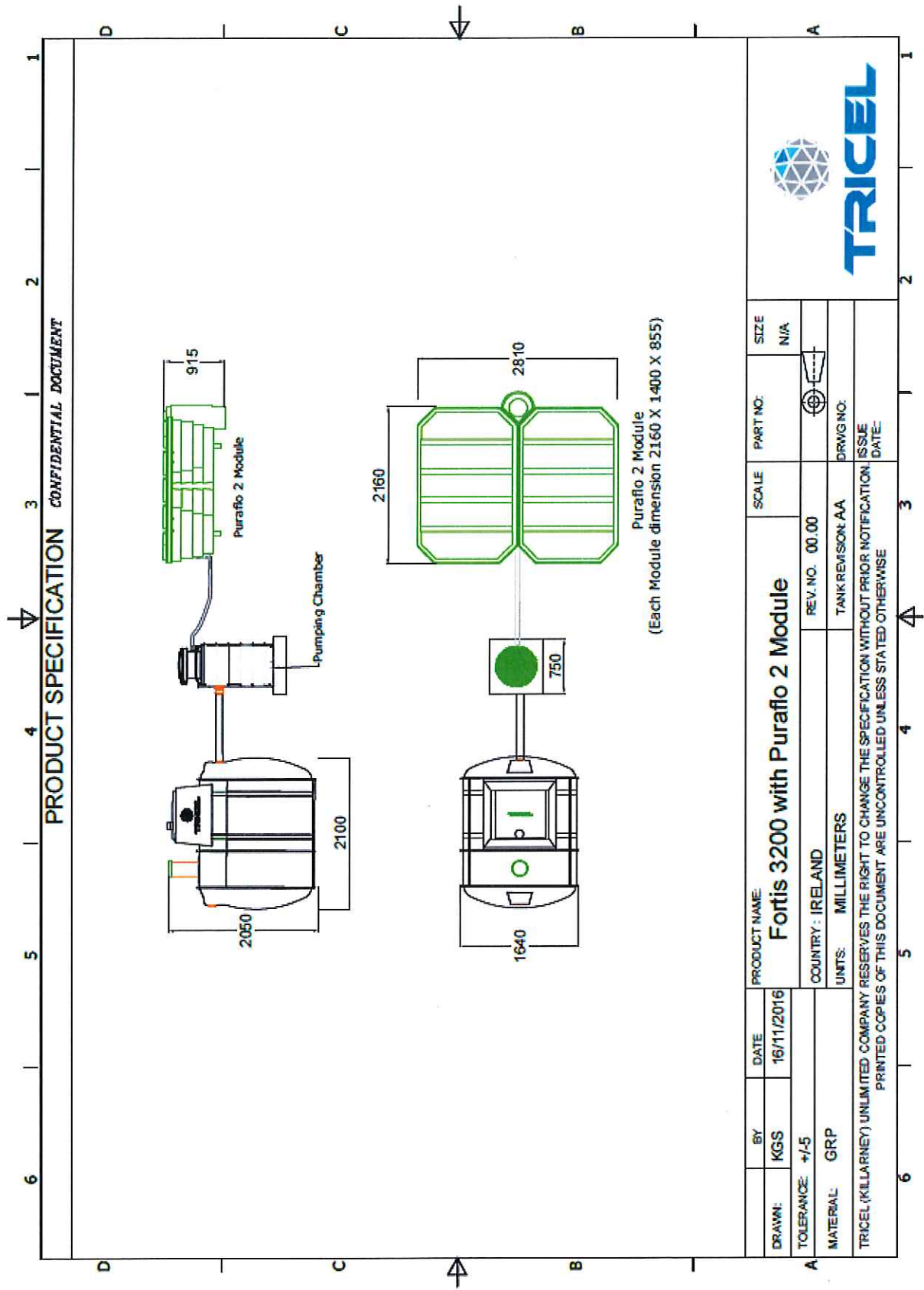
Population equivalent (PE)	Drawing of model of the range	Watertightness (EN 12566-3 Annex A)	Treatment Efficiency (EN 12566-3 Annex B)	Structural Behaviour (EN 12566-3 Annex C)	Durability
7		<p>Pass</p> <p>PIA2015-WD/NC-1404-1021.01</p> <p>PIA2010-WD-0909-1057</p>	<p>Pass</p> <p>Range conformity according to S.R. 66:2015</p>	<p>Pass</p> <p>For wet ground conditions also, 1.25 m installation depth from inlet invert</p> <p>For dry ground conditions only, 0.10 m installation depth from inlet invert</p>	<p>Pass</p> <p>PIA2015-DH-1504-1023.1</p> <p>PIA2016-DH-1604-1056.01</p>
9		<p>Pass</p> <p>PIA2015-WD/NC-1404-1021.01</p> <p>PIA2010-WD-0909-1057</p>	<p>Pass</p> <p>Range conformity according to S.R. 66:2015</p>	<p>Pass</p> <p>For wet ground conditions also, 1.25 m installation depth from inlet invert</p> <p>For dry ground conditions only, 0.10 m installation depth from inlet invert</p>	<p>Pass</p> <p>PIA2015-DH-1504-1023.1</p> <p>PIA2016-DH-1604-1056.01</p>

Population equivalent (PE)	Drawing of model of the range	Watertightness (EN 12566-3 Annex A)	Treatment Efficiency (EN 12566-3 Annex B)	Structural Behaviour (EN 12566-3 Annex C)	Durability
11		<p>Pass</p> <p>PIA2015-WD/NC-1404-1021.01</p> <p>PIA2010-WD-0909-1057</p>	<p>Pass</p> <p>Range conformity according to S.R. 66:2015</p>	<p>Pass</p> <p>For wet ground conditions also, 1.25 m installation depth from inlet invert</p> <p>For dry ground conditions only, 0.10 m installation depth from inlet invert</p>	<p>Pass</p> <p>PIA2015-DH-1504-1023.1</p> <p>PIA2016-DH-1604-1056.01</p>
15		<p>Pass</p> <p>PIA2015-WD/NC-1404-1021.01</p> <p>PIA2010-WD-0909-1057</p>	<p>Pass</p> <p>Range conformity according to S.R. 66:2015</p>	<p>Pass</p> <p>For wet ground conditions also, 1.25 m installation depth from inlet invert</p> <p>For dry ground conditions only, 0.10 m installation depth from inlet invert</p>	<p>Pass</p> <p>PIA2015-DH-1504-1023.1</p> <p>PIA2016-DH-1604-1056.01</p>

Population equivalent (PE)	Drawing of model of the range	Watertightness (EN 12566-3 Annex A)	Treatment Efficiency (EN 12566-3 Annex B)	Structural Behaviour (EN 12566-3 Annex C)	Durability
21		<p>Pass</p> <p>PIA2015-WD/NC-1404-1021.01</p> <p>PIA2010-WD-0909-1057</p>	<p>Pass</p> <p>Range conformity according to S.R. 66:2015</p>	<p>Pass</p> <p>PIA2013-ST-PIT-1303-1018</p> <p>For wet ground conditions also, 1.25 m installation depth from inlet invert</p> <p>PIA2010-ST-BT-0909-1057</p> <p>For dry ground conditions only, 0.10 m installation depth from inlet invert</p>	<p>Pass</p> <p>PIA2015-DH-1504-1023.1</p> <p>PIA2016-DH-1604-1056.01</p>
24		<p>Pass</p> <p>PIA2015-WD/NC-1404-1021.01</p> <p>PIA2010-WD-0909-1057</p>	<p>Pass</p> <p>Range conformity according to S.R. 66:2015</p>	<p>Pass</p> <p>For wet ground conditions also, 1.25 m installation depth from inlet invert</p> <p>For dry ground conditions only, 0.10 m installation depth from inlet invert</p>	<p>Pass</p> <p>PIA2015-DH-1504-1023.1</p> <p>PIA2016-DH-1604-1056.01</p>

Population equivalent (PE)	Drawing of model of the range	Watertightness (EN 12566-3 Annex A)	Treatment Efficiency (EN 12566-3 Annex B)	Structural Behaviour (EN 12566-3 Annex C)	Durability
33		<p>Pass</p> <p>PIA2015-WD/NC-1404-1021.01</p> <p>PIA2010-WD-0909-1057</p>	<p>Pass</p> <p>Range conformity according to S.R. 66:2015</p>	<p>Pass</p> <p>For wet ground conditions also, 1.25 m installation depth from inlet invert</p> <p>For dry ground conditions only, 0.10 m installation depth from inlet invert</p>	<p>Pass</p> <p>PIA2015-DH-1504-1023.1</p> <p>PIA2016-DH-1604-1056.01</p>
42		<p>Pass</p> <p>PIA2015-WD/NC-1404-1021.01</p> <p>PIA2010-WD-0909-1057</p>	<p>Pass</p> <p>Range conformity according to S.R. 66:2015</p>	<p>Pass</p> <p>For wet ground conditions also, 1.25 m installation depth from inlet invert</p> <p>For dry ground conditions only, 0.10 m installation depth from inlet invert</p>	<p>Pass</p> <p>PIA2015-DH-1504-1023.1</p> <p>PIA2016-DH-1604-1056.01</p>

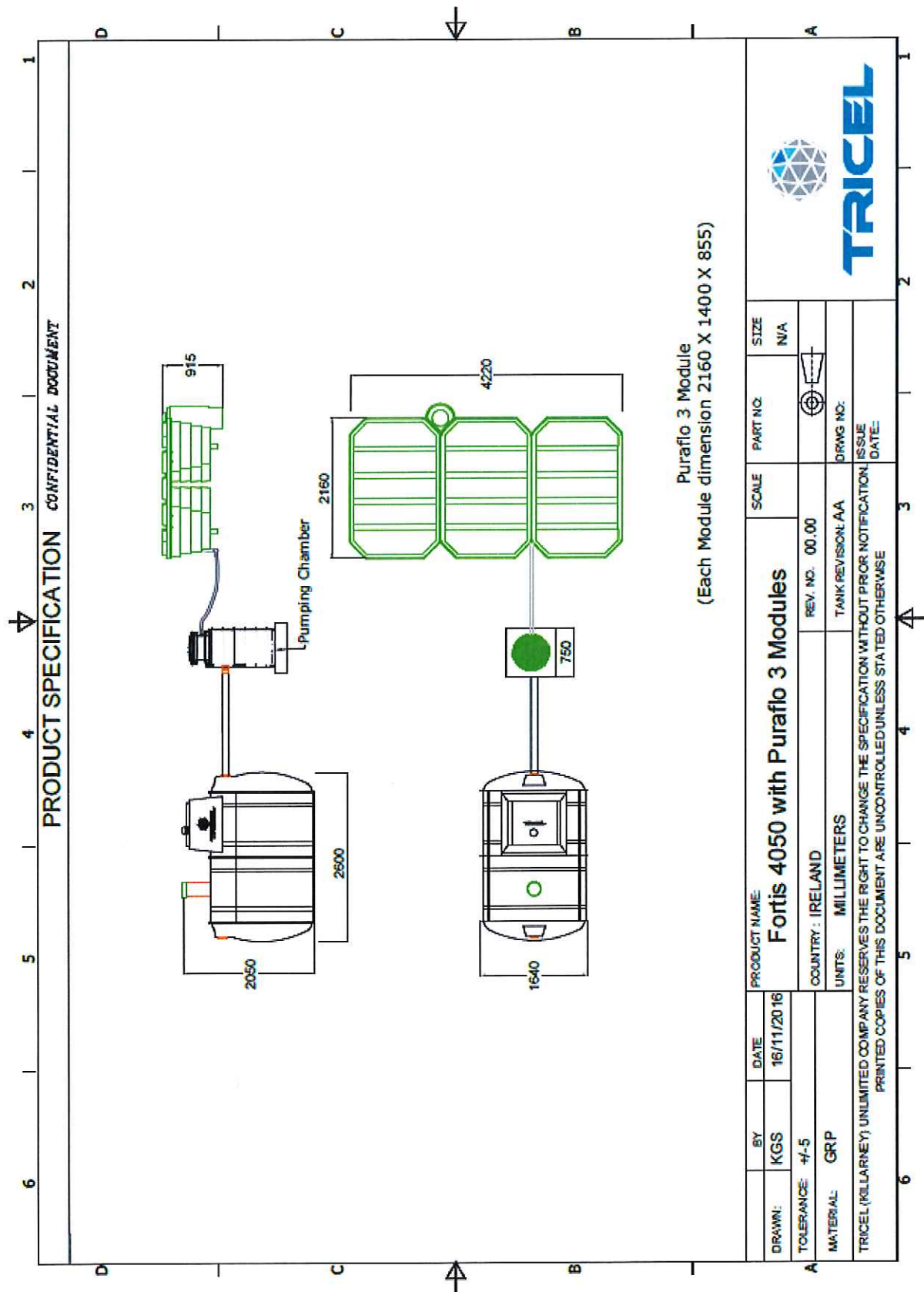
Population equivalent (PE)	Drawing of model of the range	Watertightness (EN 12566-3 Annex A)	Treatment Efficiency (EN 12566-3 Annex B)	Structural Behaviour (EN 12566-3 Annex C)	Durability
45		Pass  PIA2015-WD/NC-1404-1021.01  PIA2010-WD-0909-1057	Pass  Range conformity according to S.R. 66:2015	Pass  For wet ground conditions also, 1.25 m installation depth from inlet invert  For dry ground conditions only, 0.10 m installation depth from inlet invert	Pass  PIA2015-DH-1504-1023.1  PIA2016-DH-1604-1056.01
50		Pass  PIA2015-WD/NC-1404-1021.01  PIA2010-WD-0909-1057	Pass  Range conformity according to S.R. 66:2015	Pass  For wet ground conditions also, 1.25 m installation depth from inlet invert  For dry ground conditions only, 0.10 m installation depth from inlet invert	Pass  PIA2015-DH-1504-1023.1  PIA2016-DH-1604-1056.01

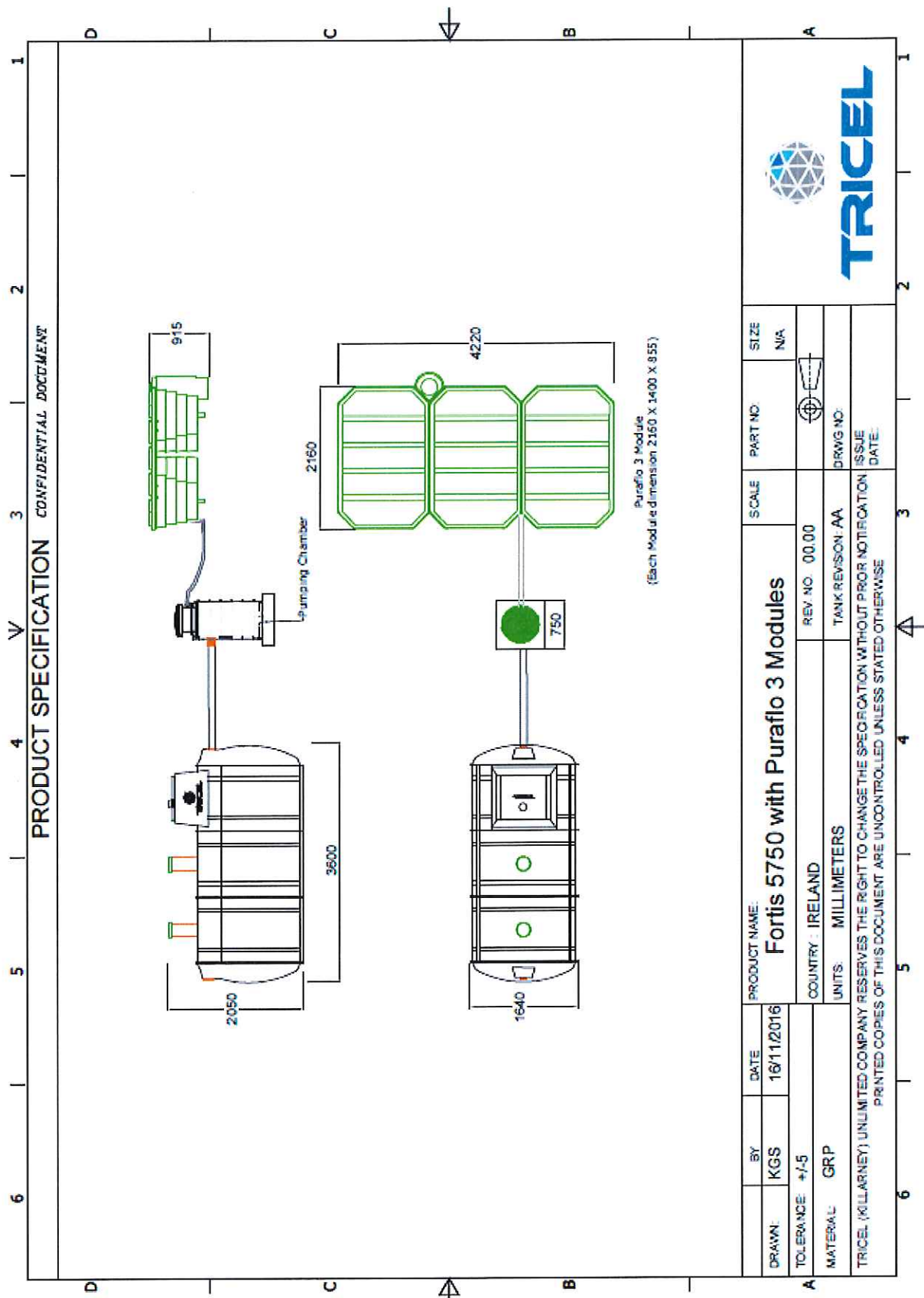


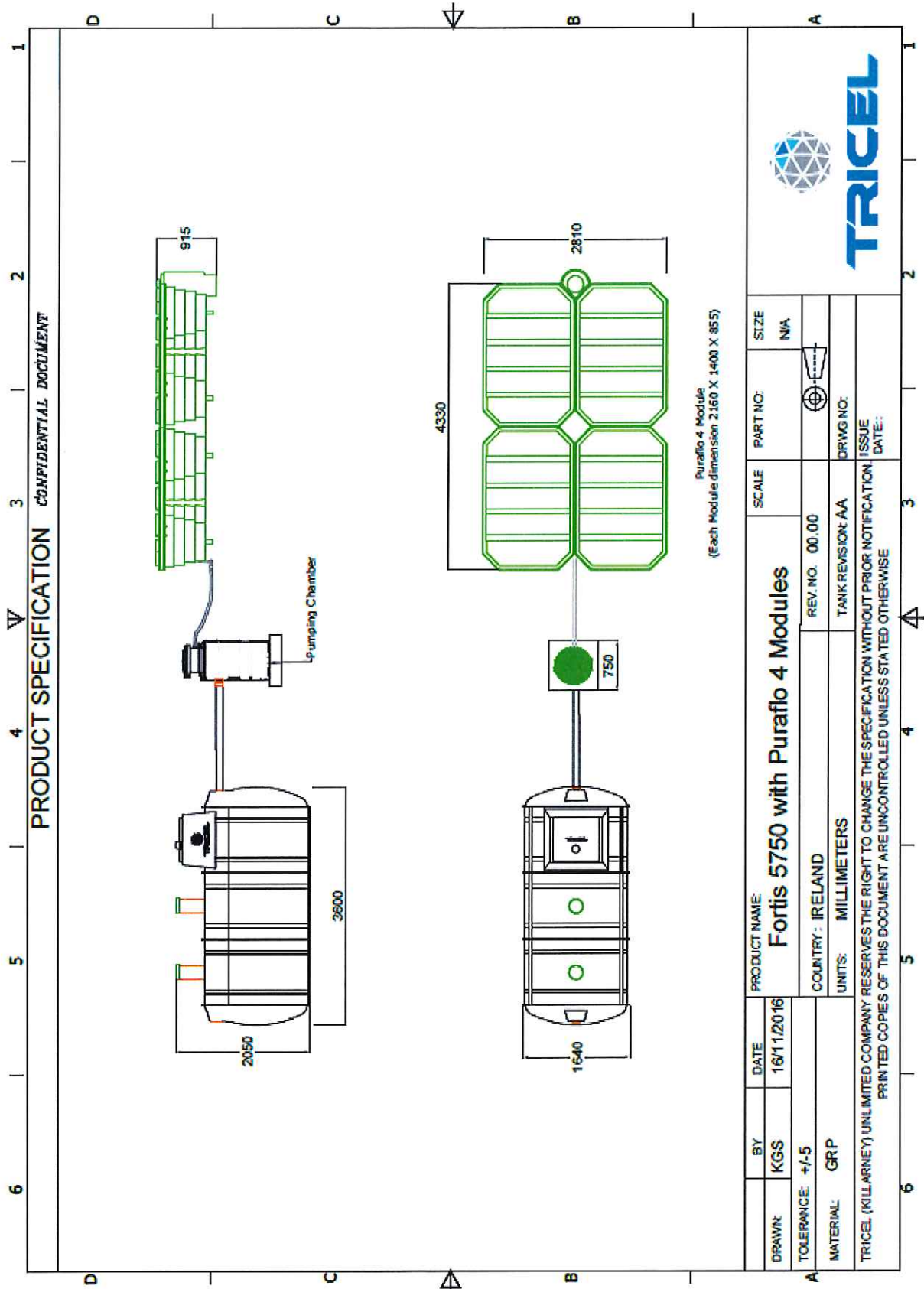
BY: KGS		DATE: 16/11/2016		PRODUCT NAME: <b>Fortis 3200 with Puraflo 2 Module</b>		SCALE: N/A		PART NO:		SIZE: N/A	
DRAWN: +/5		COUNTRY: IRELAND		REV. NO. 00.00		TANK REVISION: AA		DRAWG NO:		ISSUE DATE:	
MATERIAL: GRP		UNITS: MILLIMETERS		TRICEL (KILLARNEY) UNLIMITED COMPANY RESERVES THE RIGHT TO CHANGE THE SPECIFICATION WITHOUT PRIOR NOTIFICATION.		PRINTED COPIES OF THIS DOCUMENT ARE UNCONTROLLED UNLESS STATED OTHERWISE					



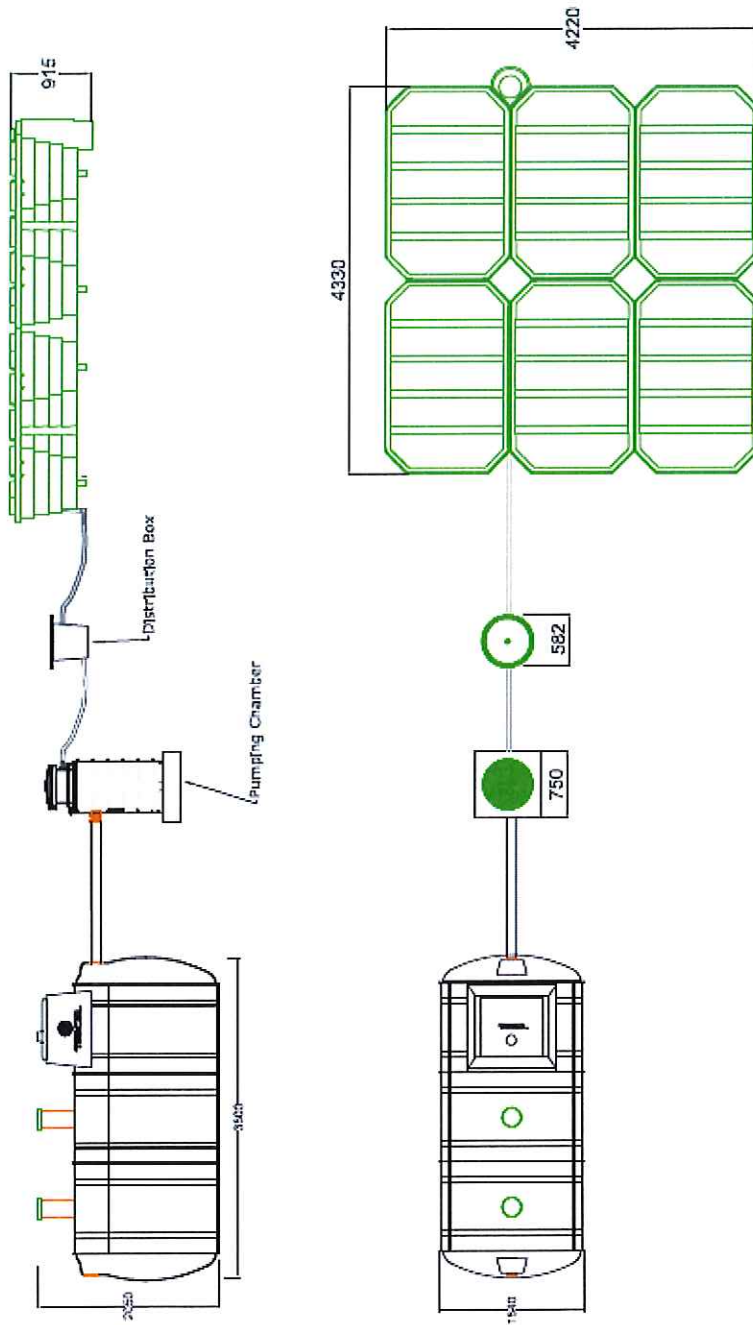








**PRODUCT SPECIFICATION CONFIDENTIAL DOCUMENT**

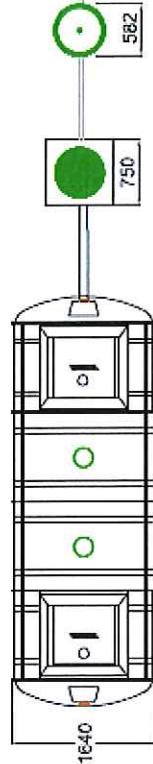
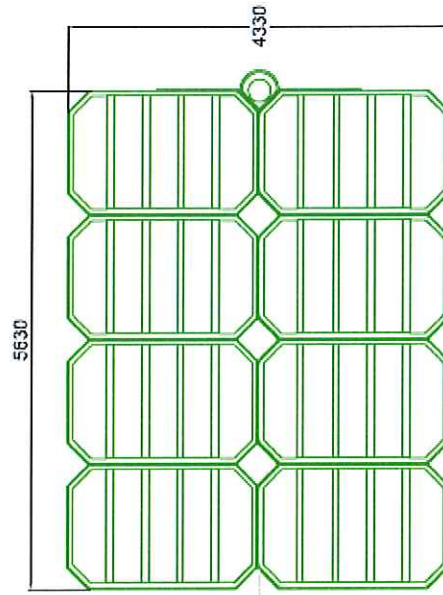
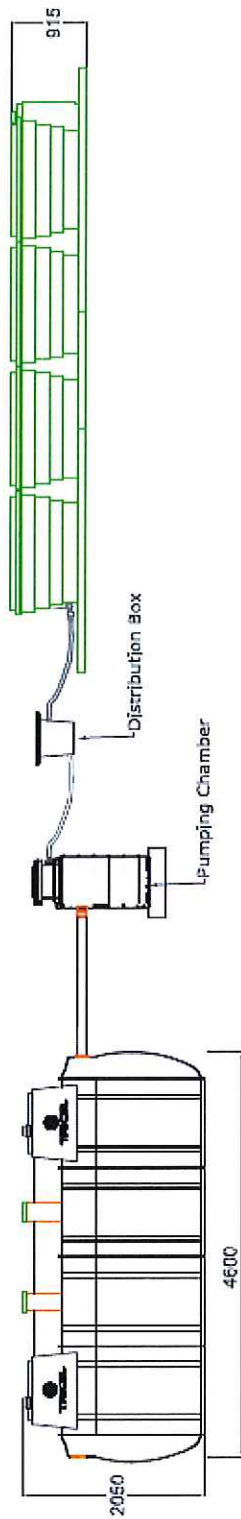


Puraflo 6 Module  
(Each Module dimensions 2150 X 1400 X 955)

BY: KGS		DATE: 16/11/2016		PRODUCT NAME: Fortis 5750 with Puraflo 6 Module		SCALE:	PART NO:	SIZE:
TOLERANCE: +/-5		MATERIAL: GRP		COUNTRY: IRELAND		REV. NO. 00.00		N/A
				UNITS: MILLIMETERS		TANK REVISION: AA	DRWG NO:	
TRICEL (KILLARNEY) UNLIMITED COMPANY RESERVES THE RIGHT TO CHANGE THE SPECIFICATION WITHOUT PRIOR NOTIFICATION. ISSUE DATE:								
PRINTED COPIES OF THIS DOCUMENT ARE UNCONTROLLED UNLESS STATED OTHERWISE								



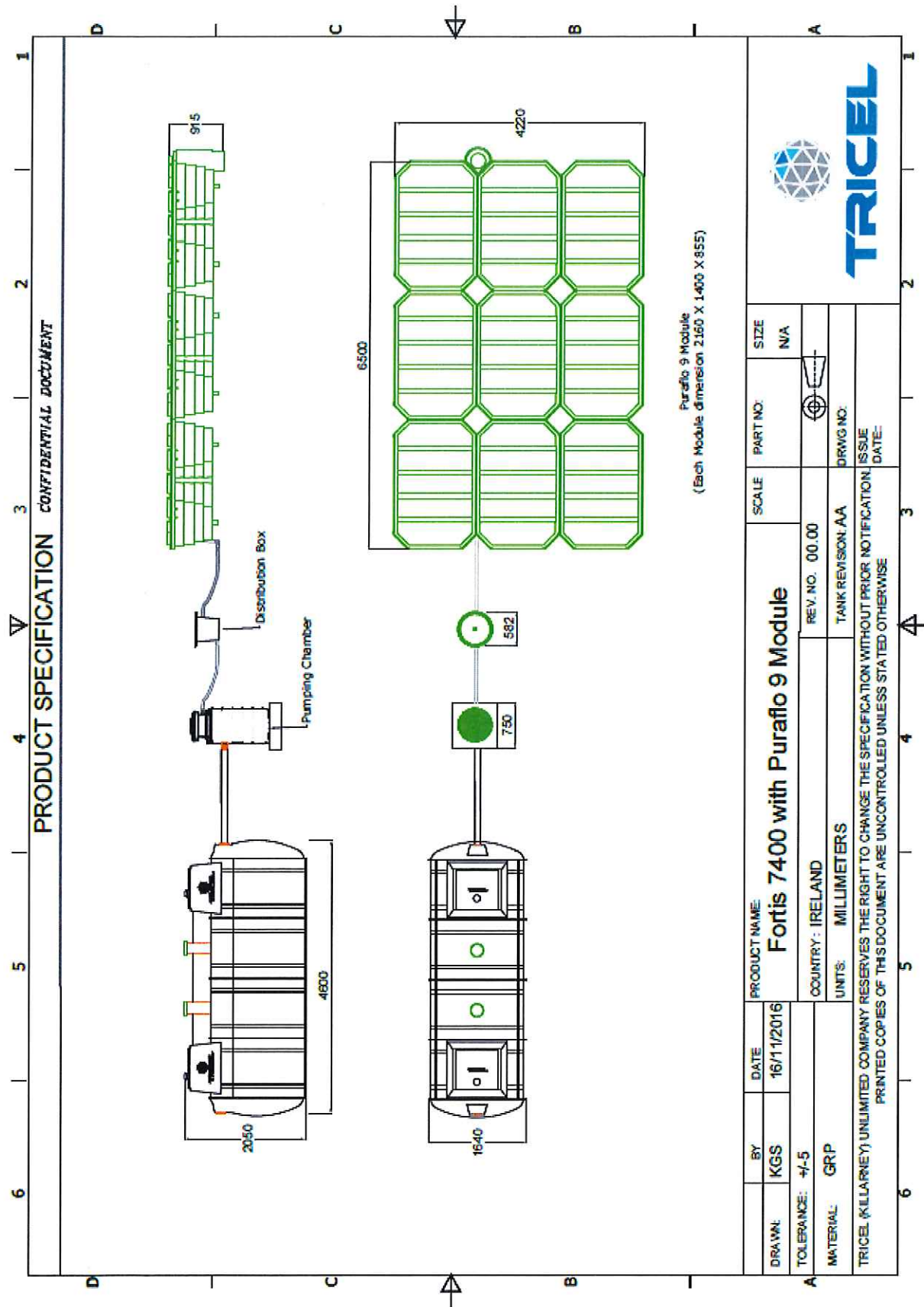
PRODUCT SPECIFICATION CONFIDENTIAL DOCUMENT

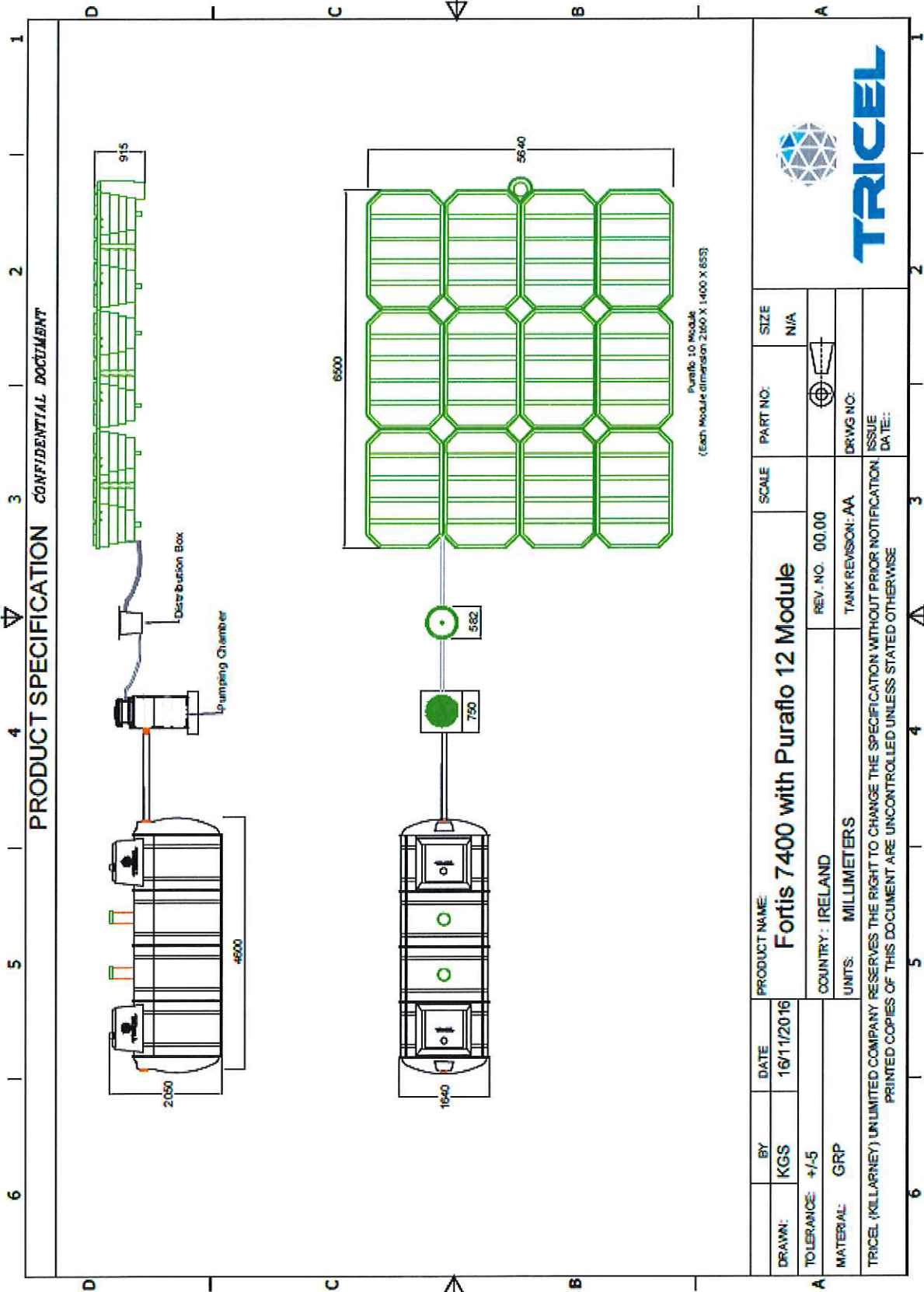


Puraflo 8 Module  
(Each Module dimension 2160 X 1400 X 855)

BY:	DATE:	PRODUCT NAME:	SCALE:	PART NO.:	SIZE:
KGS	16/11/2016	<b>Fortis 7400 with Puraflo 8 Module</b>			N/A
TOLERANCE: +/-5		COUNTRY: IRELAND	REV. NO. 00.00		
MATERIAL: GRP		UNITS: MILLIMETERS	TANK REVISION: AA	DRWG NO.:	
TRICEL (KILLARNEY) UNLIMITED COMPANY RESERVES THE RIGHT TO CHANGE THE SPECIFICATION WITHOUT PRIOR NOTIFICATION. ISSUE DATE: PRINTED COPIES OF THIS DOCUMENT ARE UNCONTROLLED UNLESS STATED OTHERWISE					







PRODUCT SPECIFICATION CONFIDENTIAL DOCUMENT



BY: KGS	DATE: 16/1/2016	PRODUCT NAME: Fortis 7400 with Puraflo 12 Module	SCALE: 1:1	PART NO:	SIZE: N/A
TOLERANCE: +/-5		COUNTRY: IRELAND	REV. NO: 00.00		
MATERIAL: GRP		UNITS: MILLIMETERS	TANK REVISION: AA	DRWG NO:	ISSUE DATE:
TRICEL (KELLARNEY) UNLIMITED COMPANY RESERVES THE RIGHT TO CHANGE THE SPECIFICATION WITHOUT PRIOR NOTIFICATION. PRINTED COPIES OF THIS DOCUMENT ARE UNCONTROLLED UNLESS STATED OTHERWISE.					

